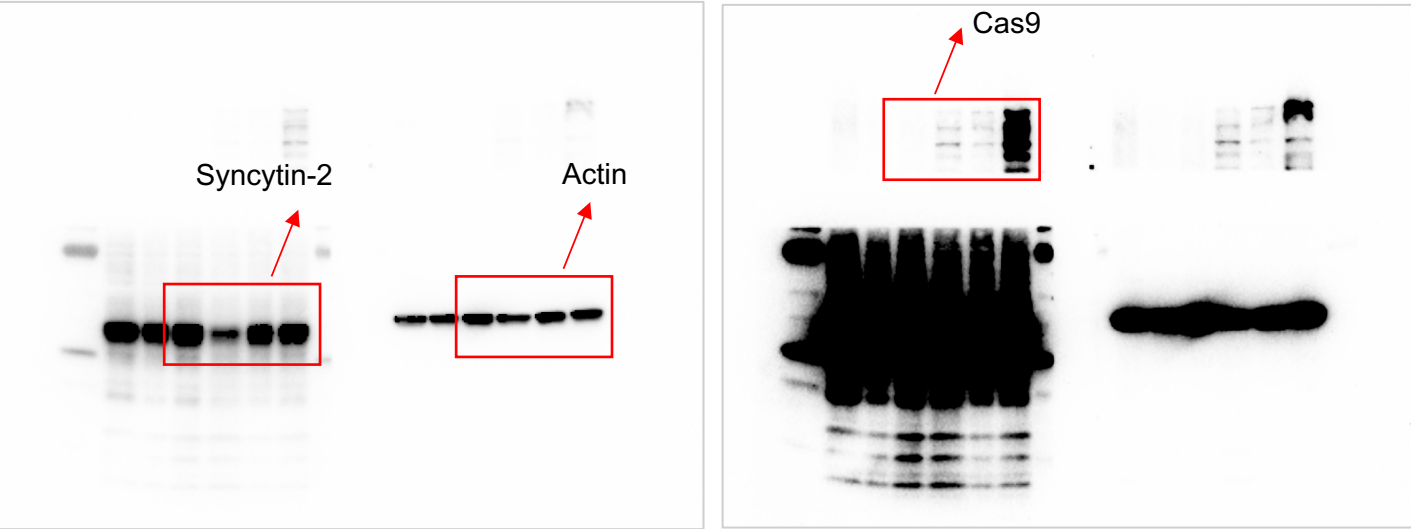


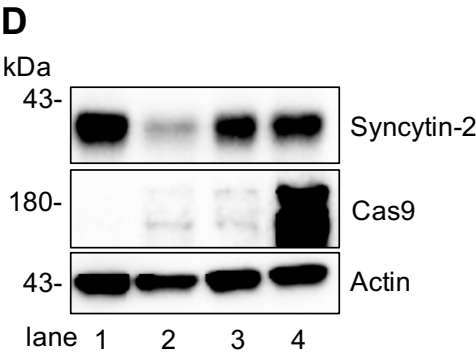
Figure 7-figure supplement 1D

uncropped blots

Long exposure



Note: the other lanes are for other experiments. The bands at other positions may be unspecific bands.



Syncytin-2 was knocked-down in MDA-MB-231 reporter cells using CRISPRi. Lane 1, reporter cell with control plasmid; lane 2, reporter cell with low level of dCas9 and gRNA for syncytin-2 knockdown; lane 3, reporter cell with low level of dCas9 only; lane 4, reporter cell with high level of dCas9 only.